

A private, purpose-built  
hall of residence offering  
38 en suite rooms



# If you're a student studying at Central College in Nottingham, Flewitt House is the perfect place to live

## Central location

- Only a 15-minute walk to Central College's Beeston campus
- Located in central Beeston close to supermarkets and shops
- Quick and easy connections via bus and tram to Central College and Nottingham centre (stations are opposite the building)

## A modern space

- Constructed in 2014, the house provides 38 en suite bedrooms over three floors
- Flats arranged around a communal kitchen with dining facilities
- Wi-Fi provided throughout
- On site cycle storage
- Car parking provided (at an additional cost if required)

## Safe and secure

- Coded entry system into the building and CCTV within the communal areas
- 24 hour number for emergencies or for lost keys
- Cleaners provided within communal areas during the week



A young man with short dark hair and glasses is smiling broadly, showing his teeth. He is wearing a dark polo shirt. The background is a blurred indoor setting with another person's face partially visible on the left. The entire image has a blue color cast.

## You'll be living with like-minded people

Exclusively for international students at Central College.

Flats arranged as female or male only.

# About our accommodation

Flewitt House's purpose-built student accommodation is perfect for young people living away for the first time and studying somewhere new.

Offering students an immediate community of like-minded residents, the accommodation offers flats dedicated as either all male or all female.

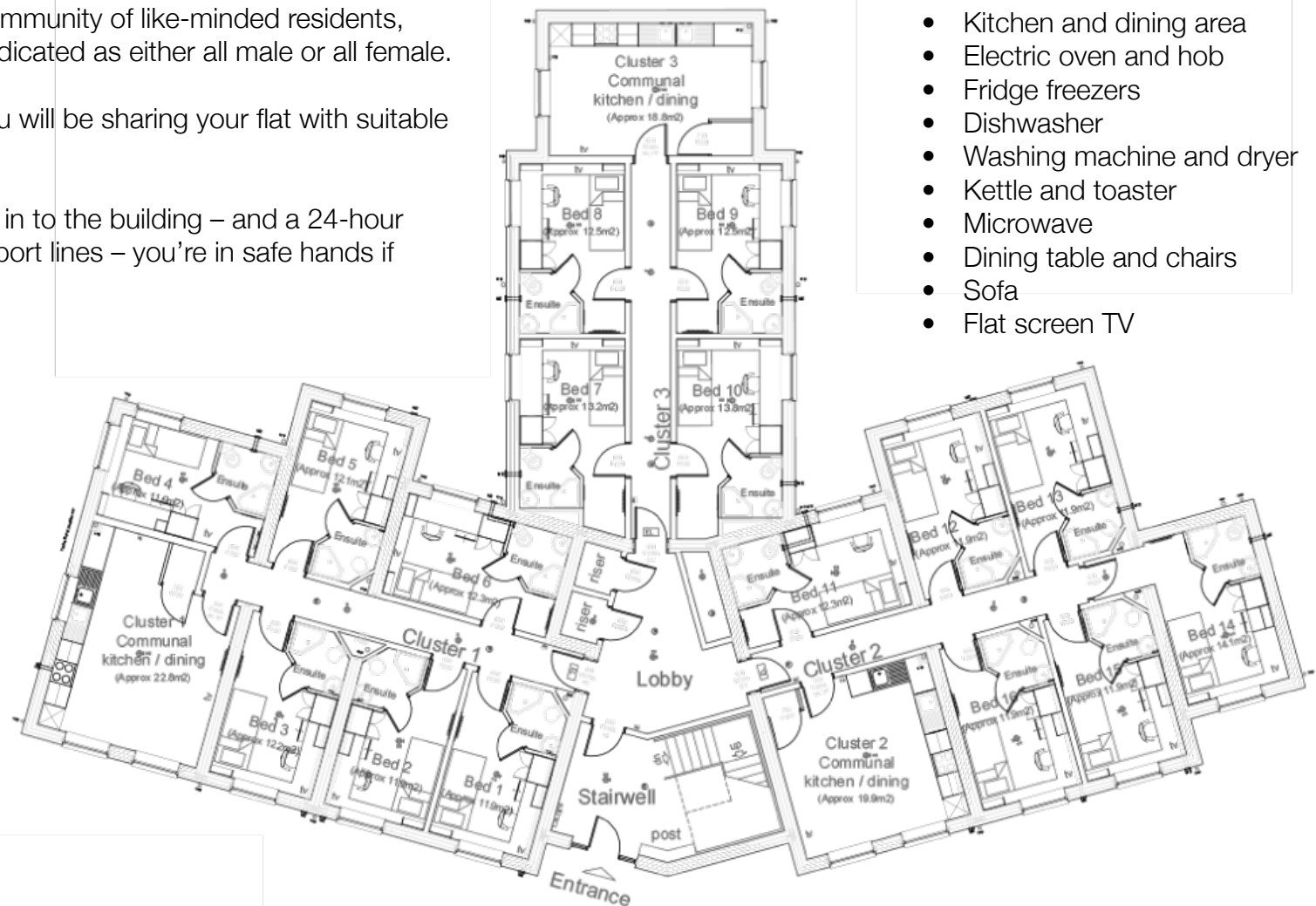
There is the peace of mind that you will be sharing your flat with suitable roommates.

With a secure coded entry system in to the building – and a 24-hour emergency repair and access support lines – you're in safe hands if any problems should arise.

Sample plan of the ground floor:

Other floors are arranged in similar clusters of individual flats centred around the following communal facilities:

- Kitchen and dining area
- Electric oven and hob
- Fridge freezers
- Dishwasher
- Washing machine and dryer
- Kettle and toaster
- Microwave
- Dining table and chairs
- Sofa
- Flat screen TV



## The rooms we offer:

- Rooms are arranged in seven flats of between four and six bedrooms – all arranged around communal facilities.
- Five flats contain six bedrooms, while a further two flats provide four bedrooms each.
- Each room provides a single bed, desk, pin board, drawer unit and wardrobe.
- There is also an en suite shower room with shower cubicle, sink and WC.
- Wifi is provided to each room and in the communal areas.
- A noticeboard and TV points provided (but no TV in room).
- Rooms are furnished but bedding and kitchen utensils are not provided.
- Bedding and kitchen packs can be purchased by prior arrangement or on arrival.



Rent includes bills,  
internet usage and  
cleaning of common areas.

The standard contract length is 45  
weeks – longer periods are available  
by agreement.

# About our location

Flewitt House is situated on the edge of Beeston town centre, a 15-minute walk away from Central College's Beeston Campus.

Beeston has excellent public transport links. If you want to travel to the centre of Nottingham or further afield, all connections you need are close by and easy to find.

## Tram services

The extension to Nottingham's Tram Network is expected to open in 2015. There is a tram stop outside Flewitt House (Beeston Centre station) and one at Central College. Trams are due to run every 7-8 minutes during peak hours (15 minutes outside peak times).

Expected journey times are as follows:

- Flewitt House to Central College – 6 minutes
- Flewitt House to Uni of Nottingham (South Entrance) – 4 minutes
- Flewitt House to Queens Medial Centre – 6 minutes
- Flewitt House to Nottingham Train Station – 17 minutes

For more information visit the Nottingham Tram Network website: [www.thetram.net](http://www.thetram.net)

## Bus services

There are a number of bus companies that connect Beeston with Nottingham City Centre, Derby, East Midlands Airport and further afield.

With a journey time of between 15 and 30 minutes, bus services run to Nottingham city centre throughout the day and evening every 5 minutes.

For more information about bus services in the local area, please visit the following websites:

- Trent Barton Services: [www.trentbarton.co.uk](http://www.trentbarton.co.uk)
- Nottingham City Transport: [www.nctx.co.uk](http://www.nctx.co.uk)
- Yourbus: [www.catchyourbus.co.uk](http://www.catchyourbus.co.uk)

## Train times services

Beeston's railway station is a 10 minute walk from Flewitt House.

There are regular services in to Nottingham station (journey time 6 minutes) and direct services to London St Pancras (approx. journey time 1 hour and 40 minutes).

For more information, visit [www.thetrainline.com](http://www.thetrainline.com) and East Midlands Trains website: [www.eastmidlandstrains.co.uk](http://www.eastmidlandstrains.co.uk)

## Nearby facilities

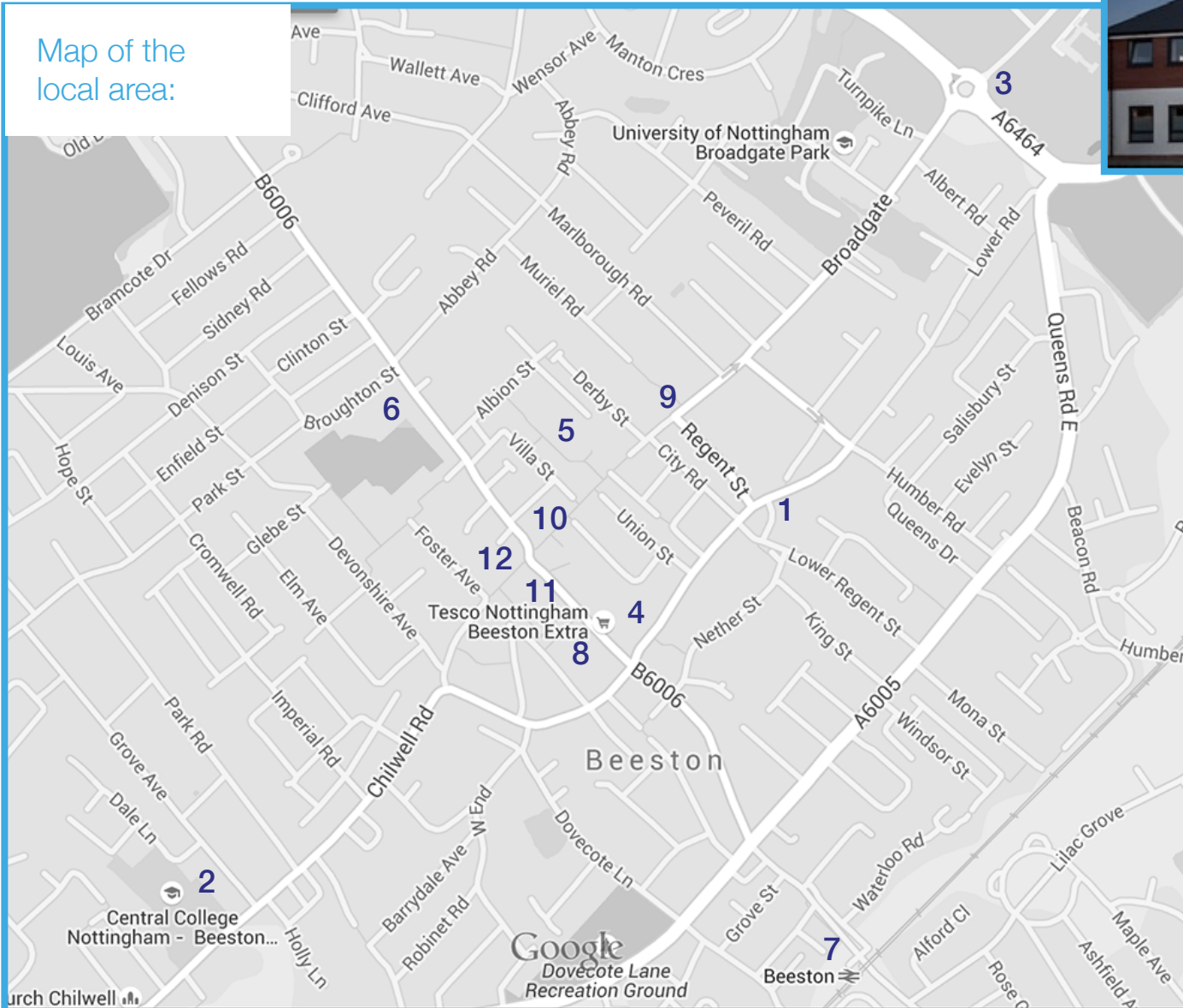
Beeston's excellent range of grocery and other shopping facilities are right on your doorstep.

You will find a range of food shops – from large supermarkets (such as Sainsburys, Tesco and Lidl) to specialist food shops (greengrocers, butchers and fishmongers) and Asian grocers.

There is a busy high street with banks, stationers, household and home goods retailers, and many restaurants.

See the map opposite for more detail.

Map of the local area:



- 1 Flewitt House
- 2 Central College campus
- 3 Nottingham University west entrance
- 4 Tesco supermarket
- 5 Sainsbury's supermarket
- 6 Lidl supermarket
- 7 Beeston train station
- 8 Beeston bus station
- 9 CP Walker office
- 10 Pedestrianised shopping centre (Beeston High Road)
- 11 The Square Shopping Centre
- 12 HSBC and other banks

# How to get in touch

Flewitt House is a privately owned hall of residence. It is managed by CP Walker & Son, a family run business based in Beeston, Nottingham.

CP Walker are Chartered Surveyors and have been letting and managing properties around the Beeston area since 1896, giving parents the peace of mind that Flewitt House is being managed by professionals with proven experience in property management.

If you have any questions about Flewitt House, please feel free to contact the CP Walker team:

**Email:** [students@cpwalker.co.uk](mailto:students@cpwalker.co.uk)

**Telephone:** +44 115 925 4062

CP Walker & Son, 107 High Road, Beeston, Nottingham NG9 2JU visit [www.cpwalker.co.uk](http://www.cpwalker.co.uk)

